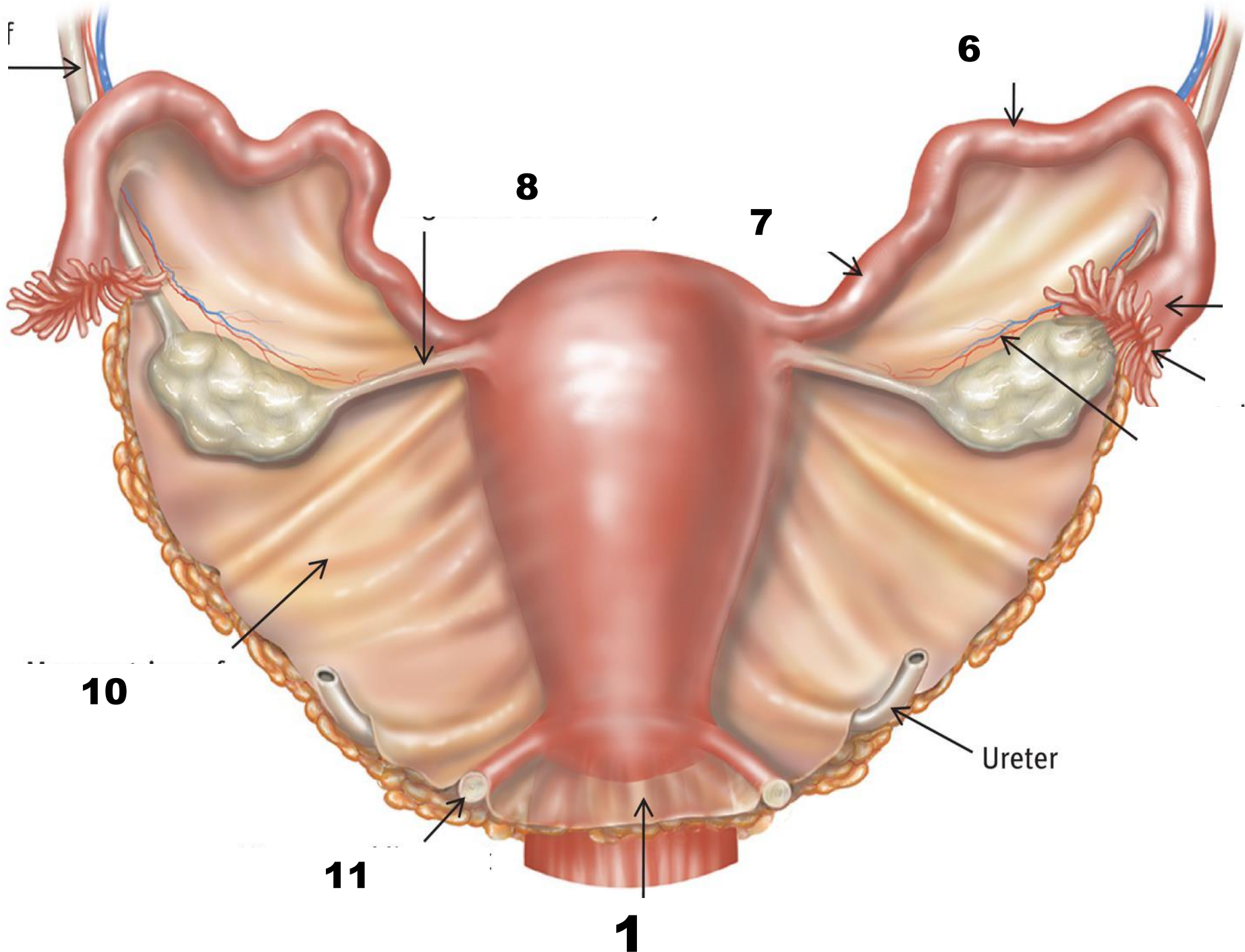
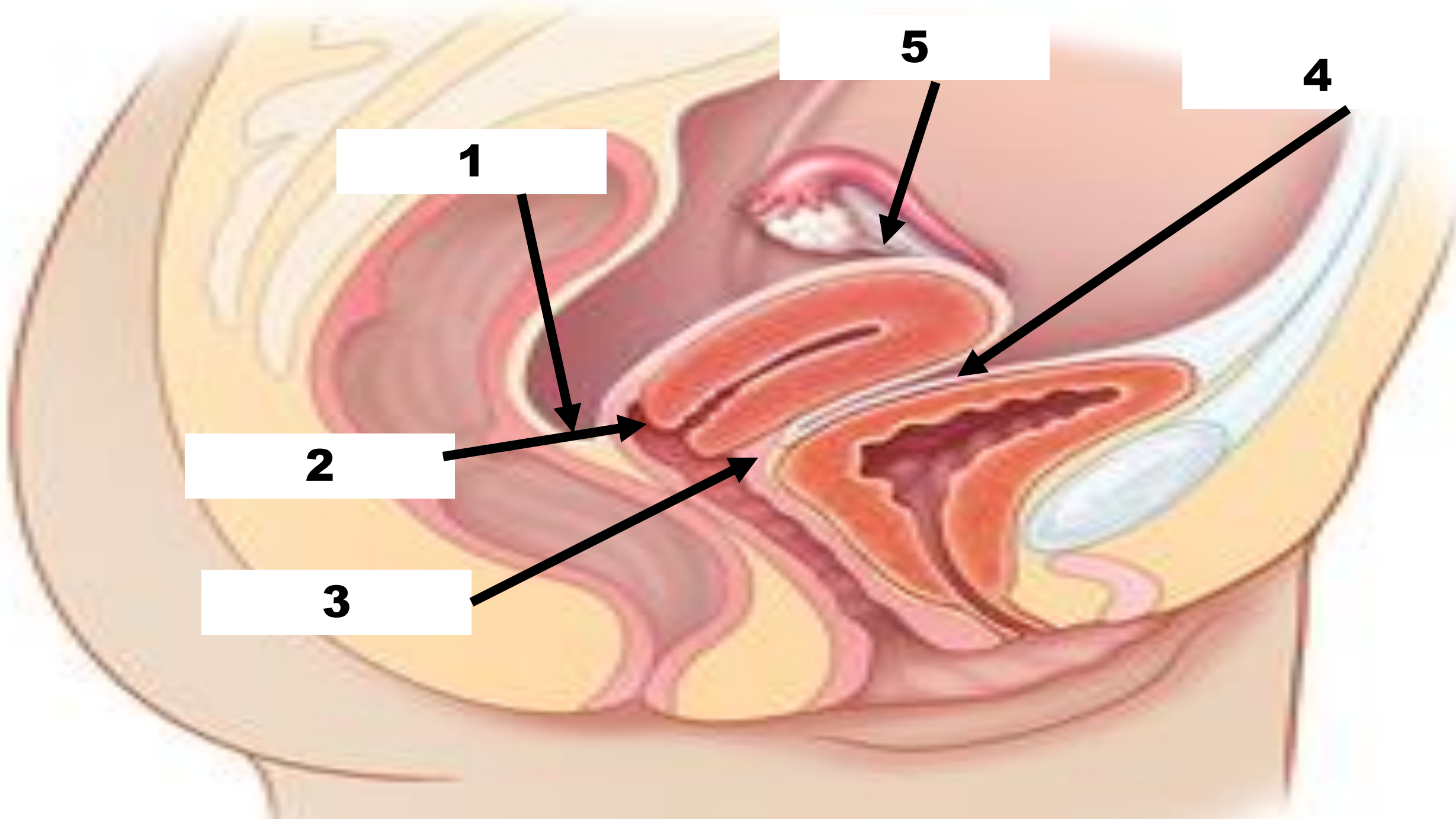


9





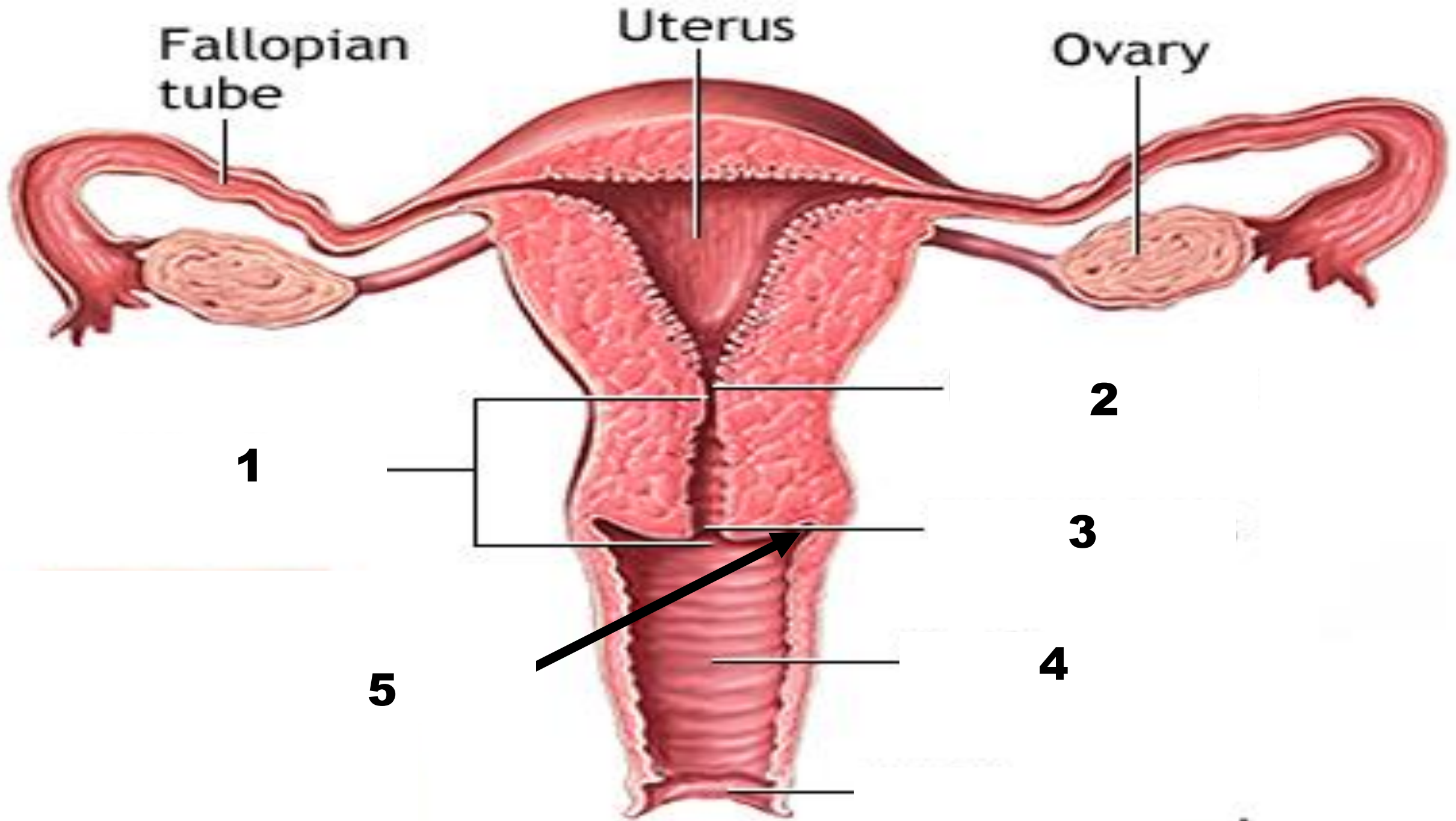
1

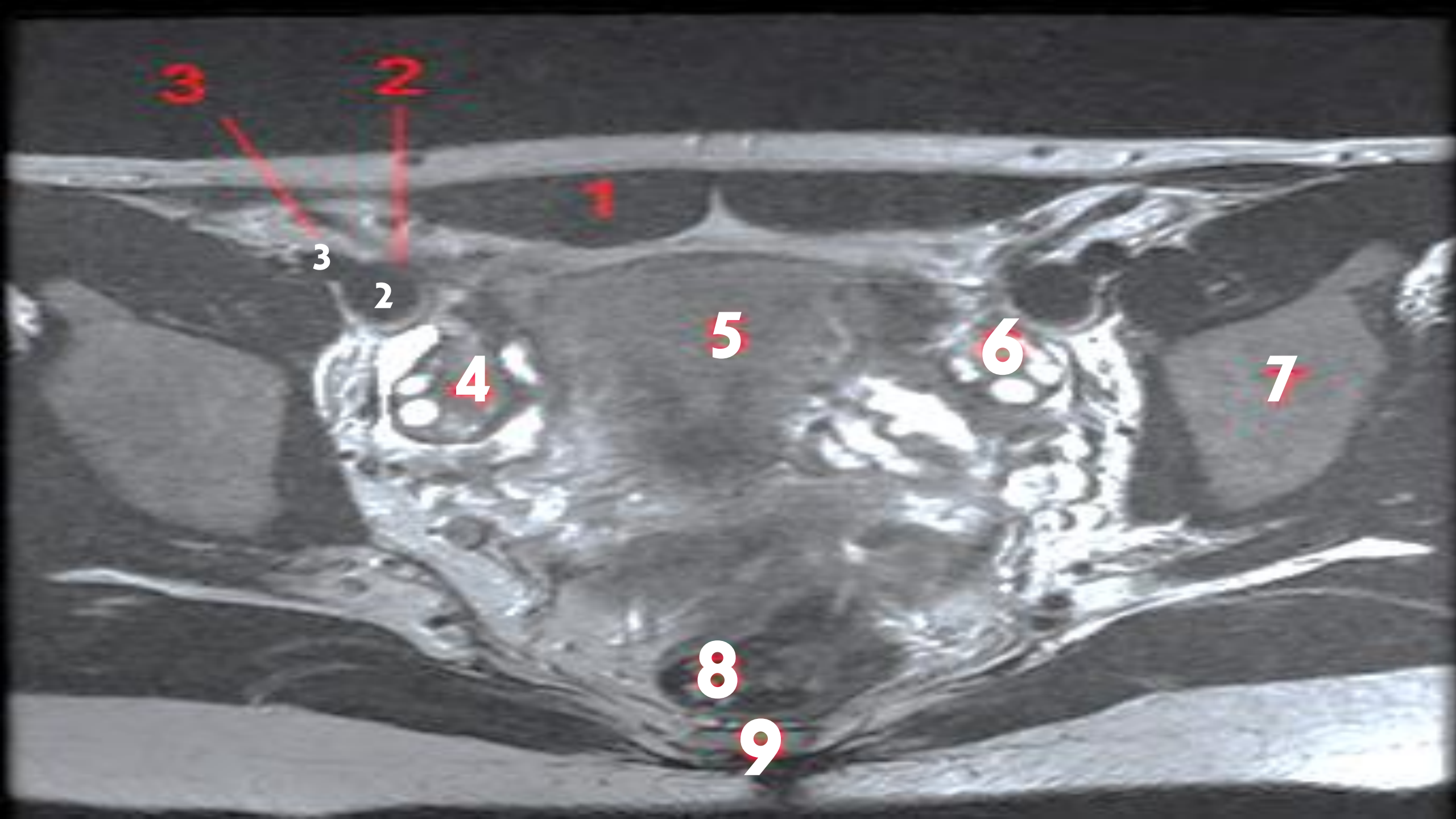
5

4

2

3





3

2

1

3

2

4

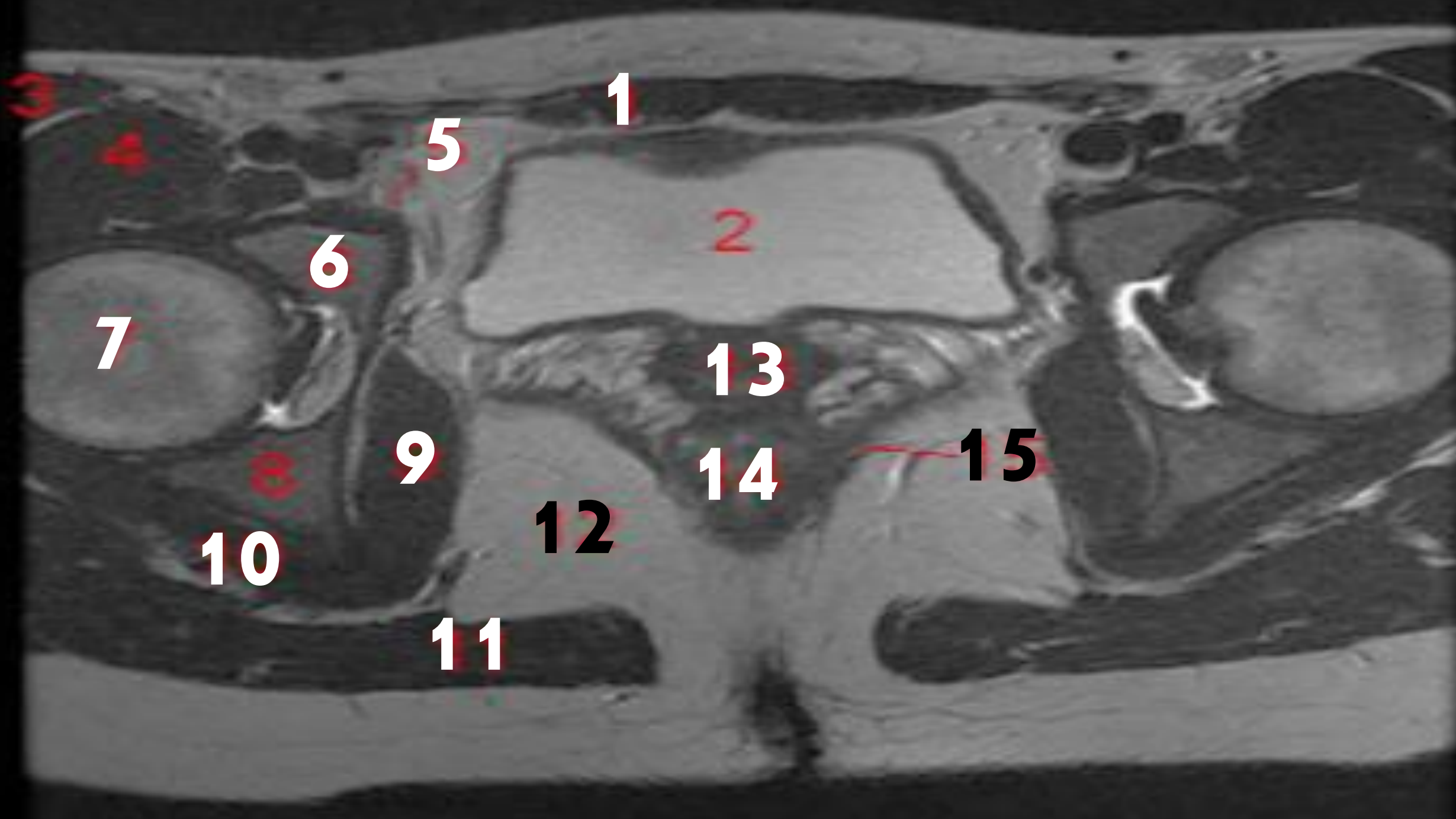
5

6

7

8

9



1

5

2

6

7

13

9

14

15

10

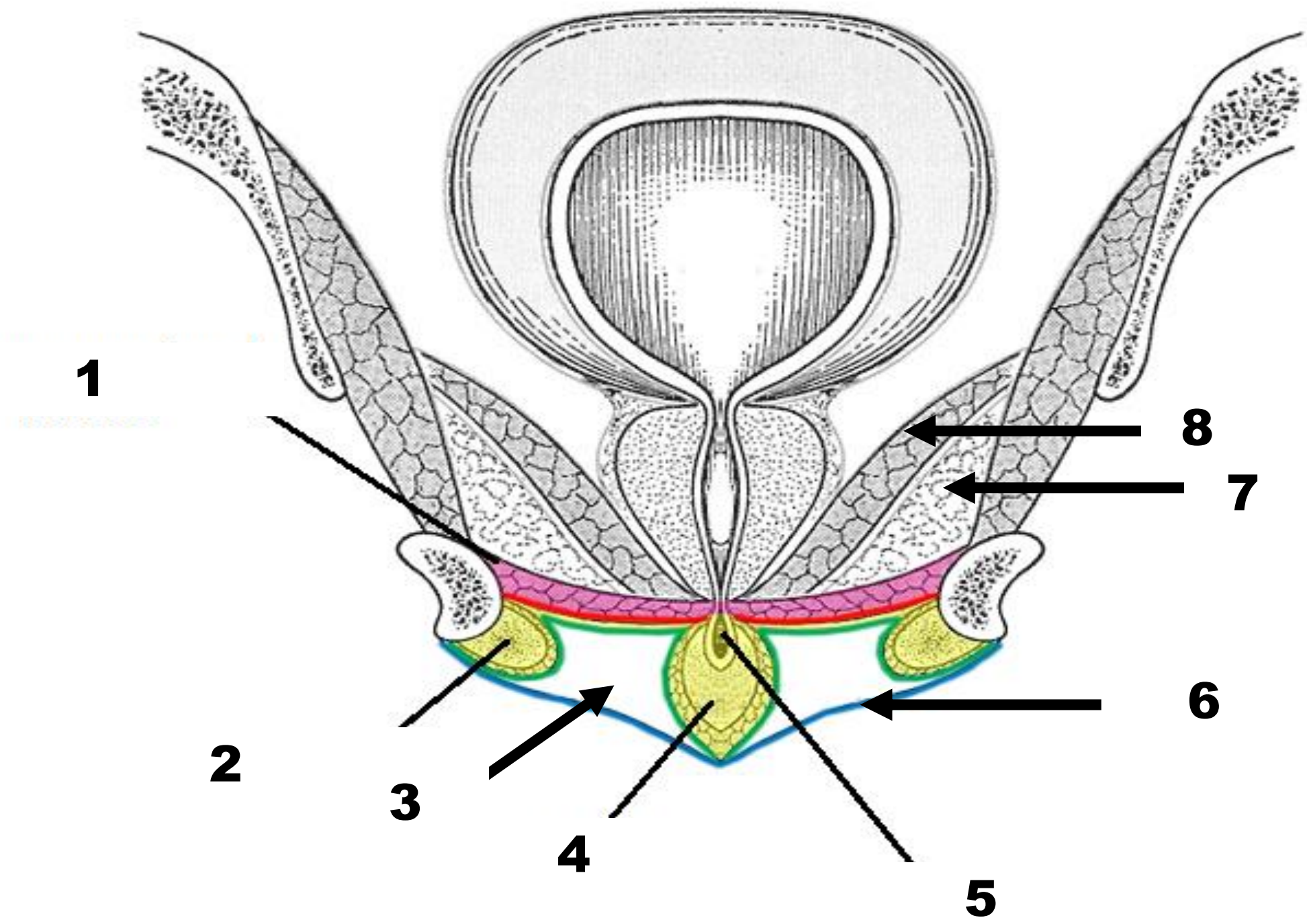
12

11

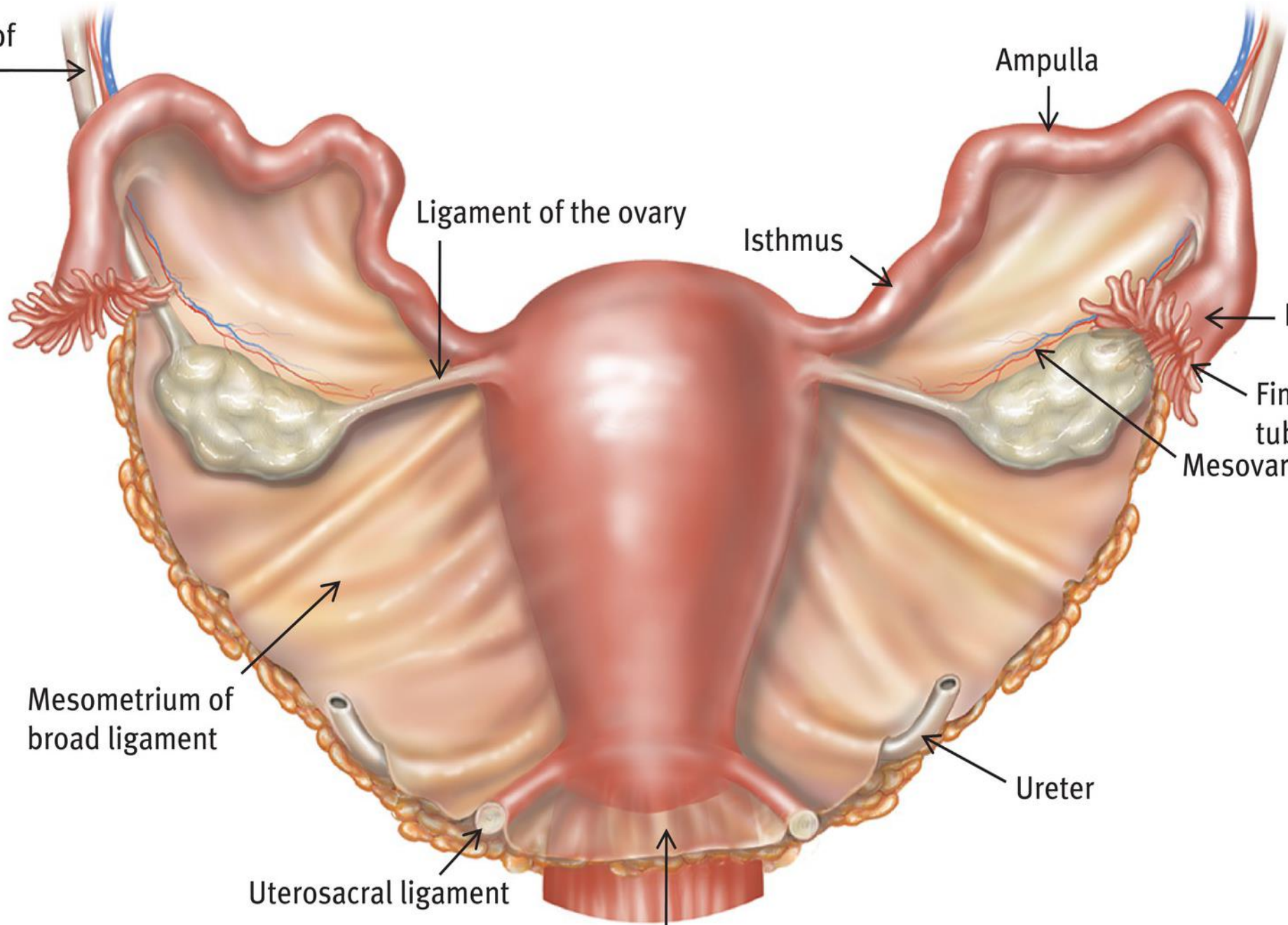
3

4

8



Suspensory ligament of the ovary



Ampulla

Ligament of the ovary

Isthmus

Infundibulum

Fimbriae of fallopian tube

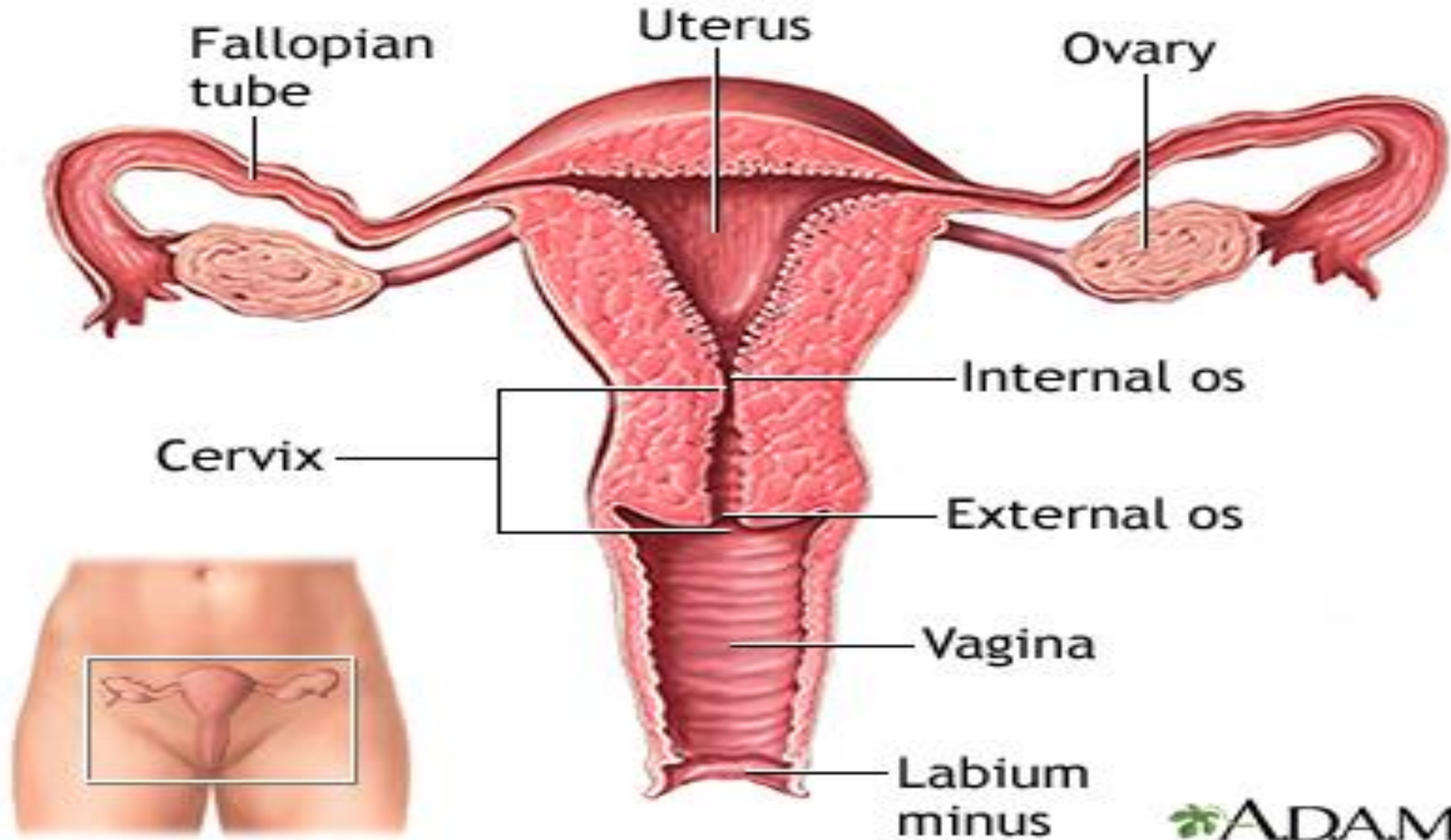
Mesovarium

Mesometrium of broad ligament

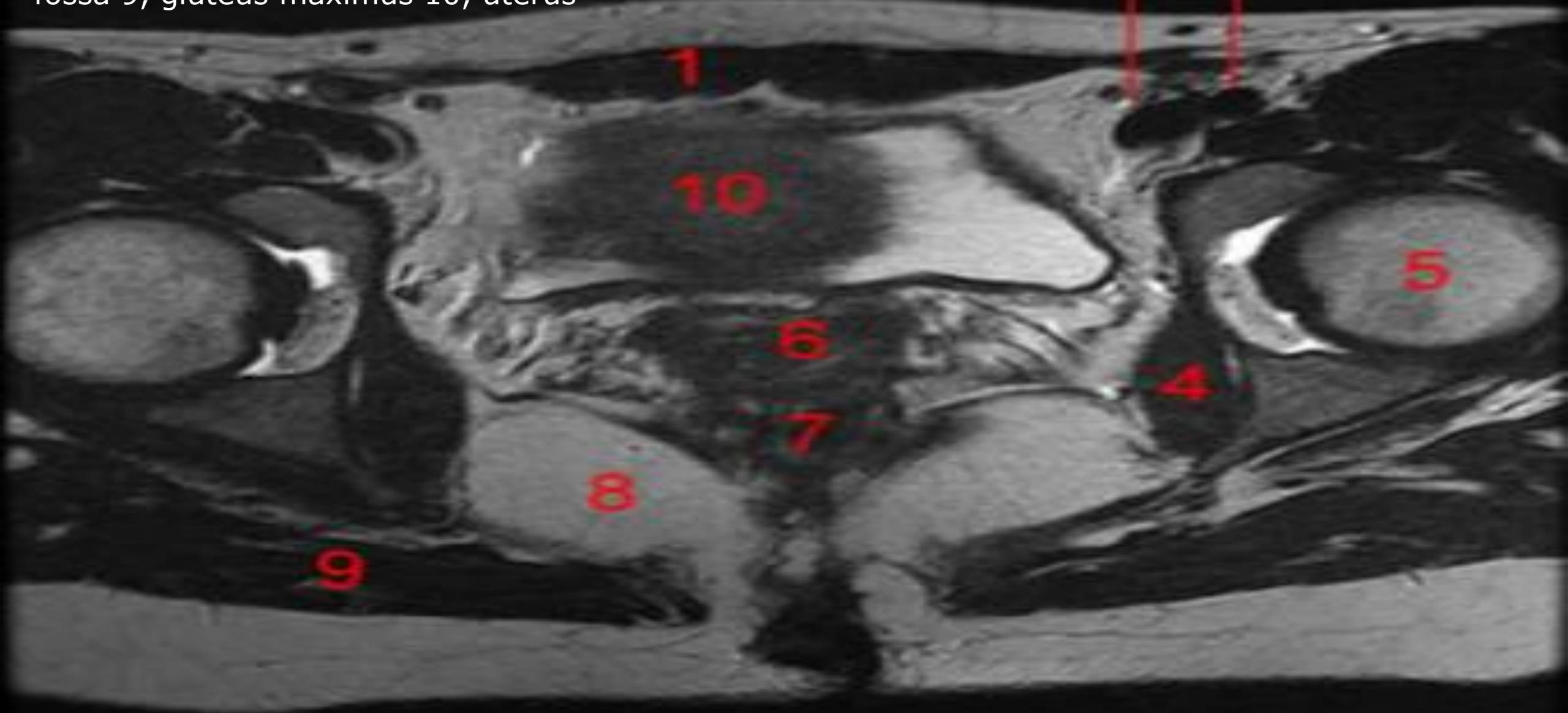
Ureter

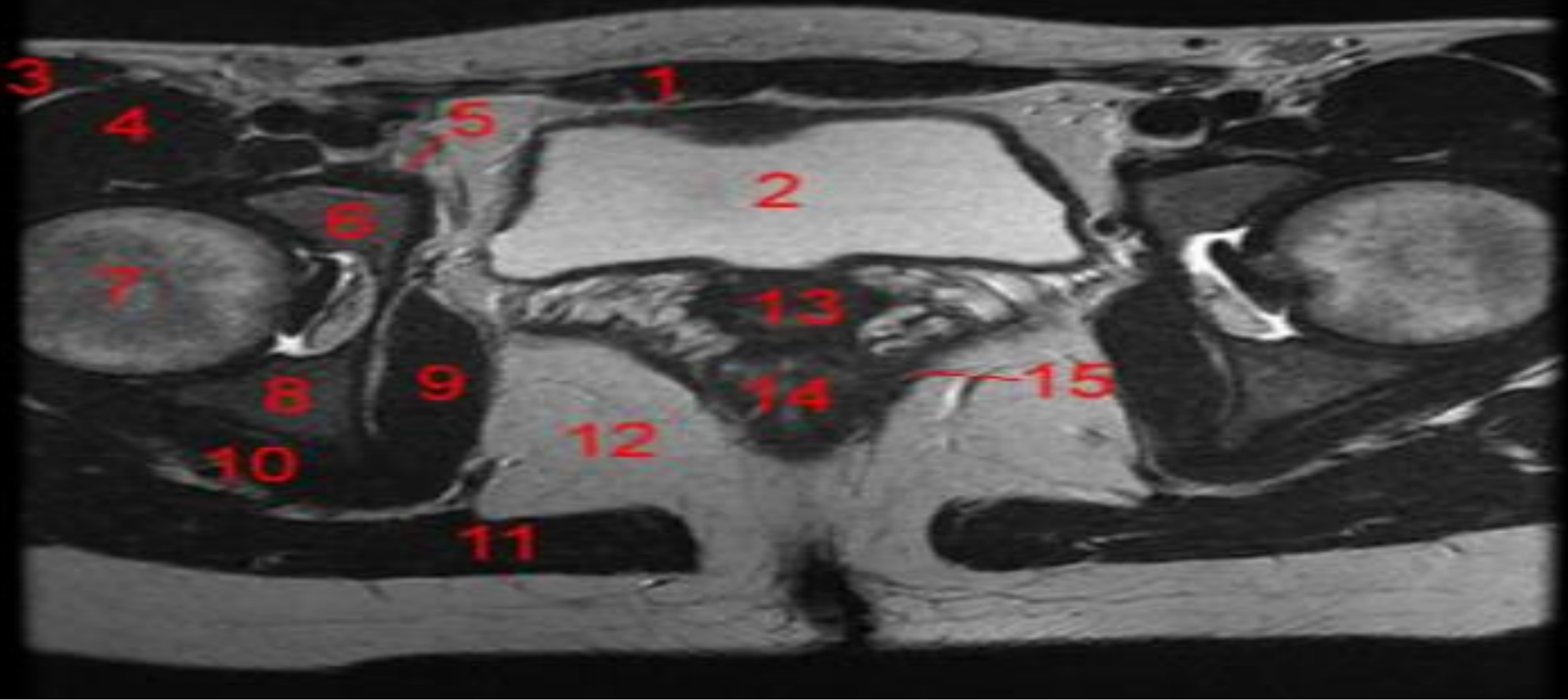
Uterosacral ligament

Rectouterine pouch



MRI of the female pelvis: T1-weighted, axial view. Image 4. 1, Rectus abdominis m. 2, external iliac vein 3, external iliac artery 4, obturator internus m. 5, head of the femur 6, endocervical canal 7, rectum 8, ischioirectal fossa 9, gluteus maximus 10, uterus





MRI of the female pelvis: T1-weighted, axial view. Image 5. 1, Rectus abdominis m. 2, bladder 3, sartorius m. 4, iliopsoas m. 5, pectineus m 6, pubis 7, head of the femur 8, ilium 9, obturator internus m. 10, gemellus sup. m. 11, gluteus maximus m. 12, ischioanal fossa 13, vagina 14, rectum

